

Research ethics self-check

Last revised 14 February 2020, schi

This form helps you determine if your project at ETH Zurich needs ethics clearance or other kinds of authorisation. It also lists the responsible bodies. In case an authorisation is required, please submit your application(s) for evaluation to the responsible body as soon as possible.

Principal Investigator (first name, last name):

Project title:

1. Ethics evaluation

Follow the decision tree on p. 3 to determine if your planned project requires an ethics evaluation.¹ Tick the matching box(es) below and follow the links to find out more about how to apply to the responsible authorities.

No ethics evaluation required

Evaluation by ETH Zurich Ethics Commission

<http://www.ethz.ch/en/research/ethics-and-animal-welfare/research-ethics.html>

Evaluation by Ethics Committee of the Canton of Zurich

https://kek.zh.ch/internet/gesundheitsdirektion/kek/de/vorgehen_gesuchseinreichung.html

Evaluation by Veterinary Office of the Canton of Zurich

<https://veta.zh.ch/internet/gesundheitsdirektion/veta/de/tierschutz0/tierversuche/gesuche-und-bewilligungen.html>

¹ Relevant laws: Federal Act on Research Involving Human Beings (SR 810.30), <https://www.admin.ch/opc/en/classified-compilation/20061313/index.html>;
Federal Act on Data Protection (SR 235.1), <https://www.admin.ch/opc/en/classified-compilation/19920153/index.html>;
Statutes of the ETH Zurich Ethics Commission (RSETHZ 413), <https://rechtssammlung.sp.ethz.ch/Dokumente/413.pdf>

2. Biotechnology clearance

Follow the decision tree on p. 4 to determine if your planned project requires biotechnology clearance.² Tick the matching box(es) below and follow the links to find out more about how to contact the responsible authorities.

No biotechnology clearance required

Notification to the Federal Coordination Center for Biotechnology

<https://www.bafu.admin.ch/bafu/en/home/topics/biotechnology/info-specialists/activities-in-contained-use.html>

Licence by the Federal Coordination Center for Biotechnology

<https://www.bafu.admin.ch/bafu/en/home/topics/biotechnology/info-specialists/activities-in-contained-use.html>

Licence by the Federal Office for the Environment

<https://www.bafu.admin.ch/bafu/en/home/topics/biotechnology/info-specialists/experimental-releases.html>

3. International collaborations and Nagoya Protocol

Follow the decision tree on p. 5 to determine if your planned project is subject to additional regulations.³ Tick the matching box(es) and follow the links to find out more about the guidelines you need to follow or how to contact the responsible authorities.

No special requirements

Study falls under the KFPE Guide for Transboundary Research Partnerships

https://naturalsciences.ch/organisations/kfpe/11_principles_7_questions

Study requires due diligence as per Federal Act on the Protection of Nature and Cultural Heritage

<https://www.admin.ch/opc/en/classified-compilation/19660144/index.html>

Notification to the Federal Office for the Environment

<https://www.bafu.admin.ch/bafu/en/home/topics/biotechnology/info-specialists/nagoya-protocol.html#-476169514>

² Relevant law: Ordinance on Handling Organisms in Contained Systems (SR 814.912), <https://www.admin.ch/opc/en/classified-compilation/20100803/index.html>

³ Relevant laws: Federal Act on the Protection of Nature and Cultural Heritage (SR 451), <https://www.admin.ch/opc/en/classified-compilation/19660144/index.html#id-3c>;

Also note: sc|nat guide "Utilization of genetic resources and associated traditional knowledge in academic research",

<https://naturwissenschaften.ch/organisations/biodiversity/abs/goodpractice>

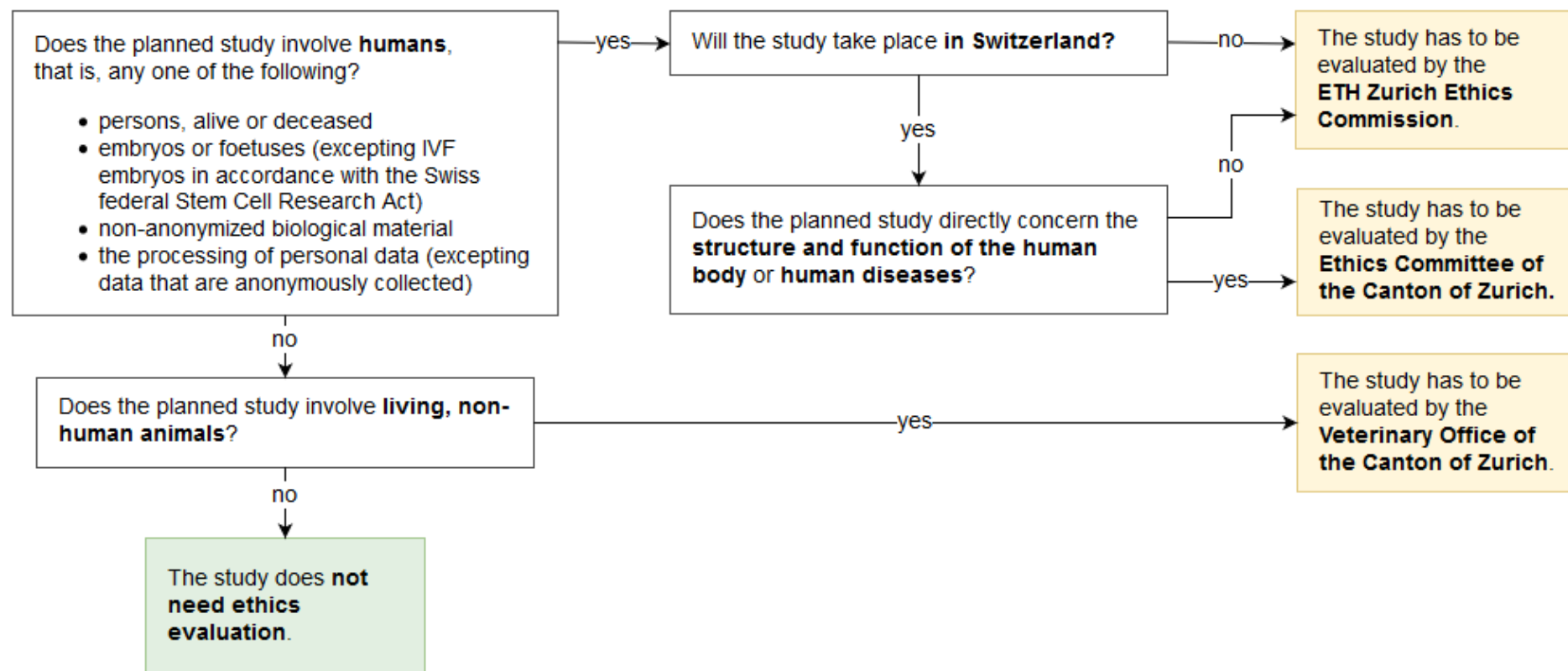


Figure 1: Decision tree for research involving humans or animals

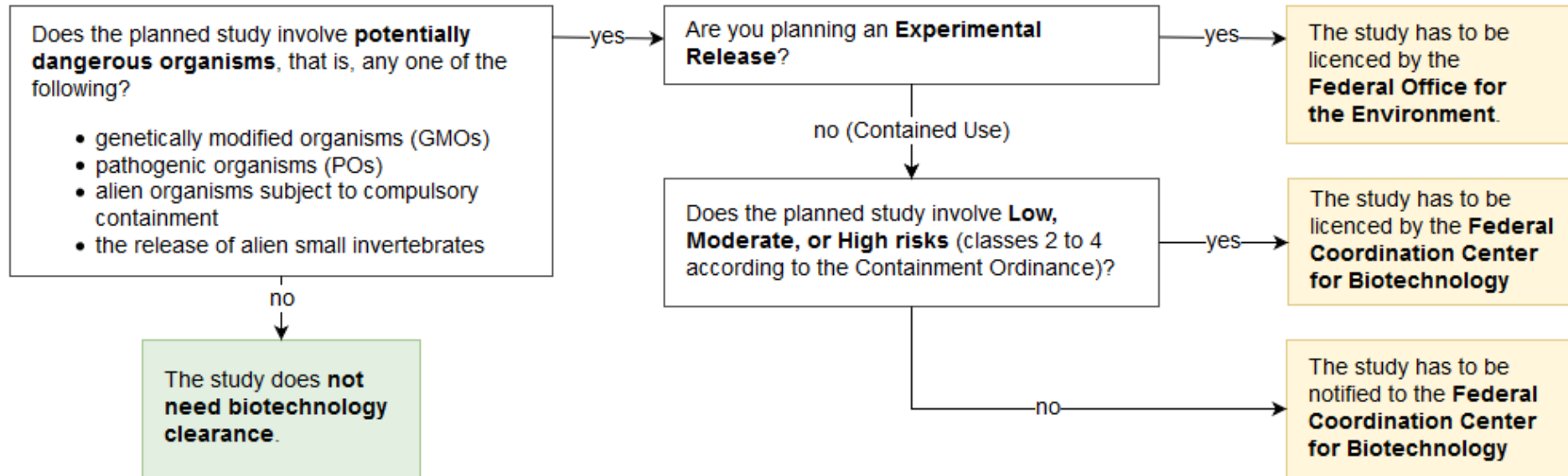


Figure 2: Decision tree for biotechnology clearance

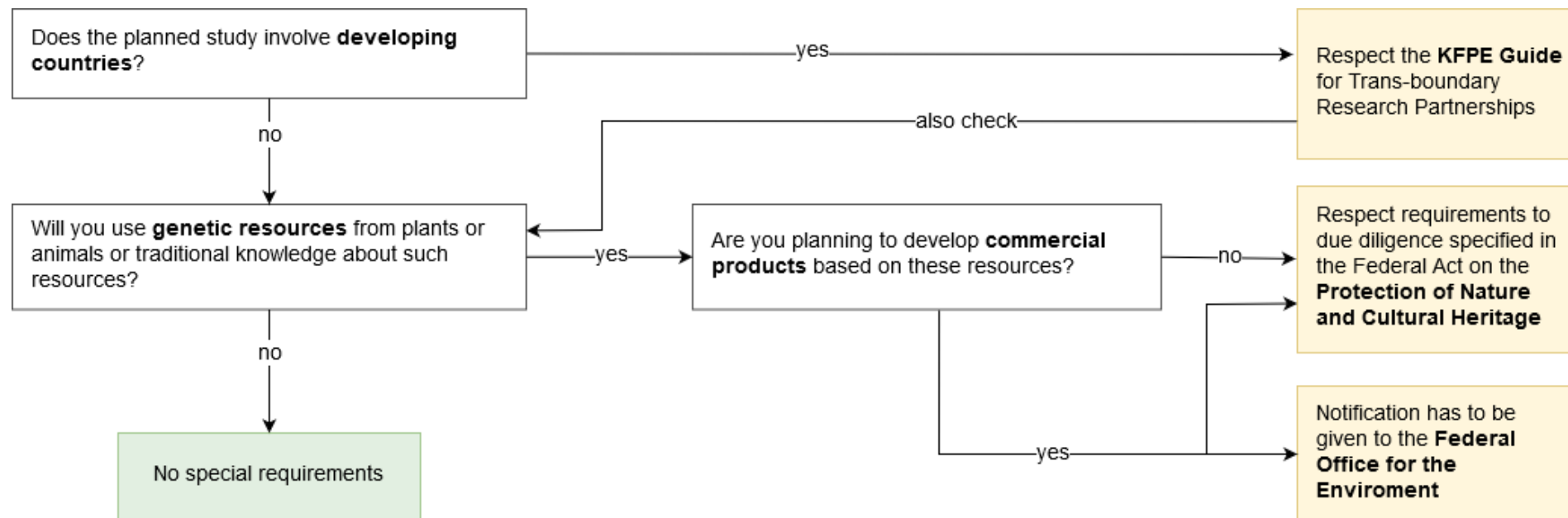


Figure 3: Decision tree for international collaborations and the Nagoya Protocol